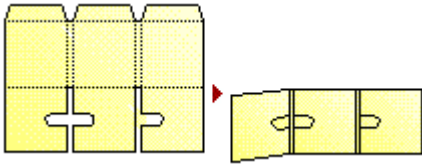
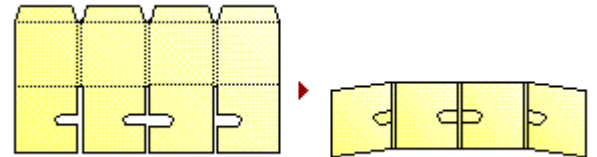
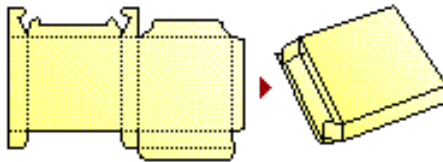
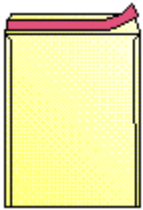
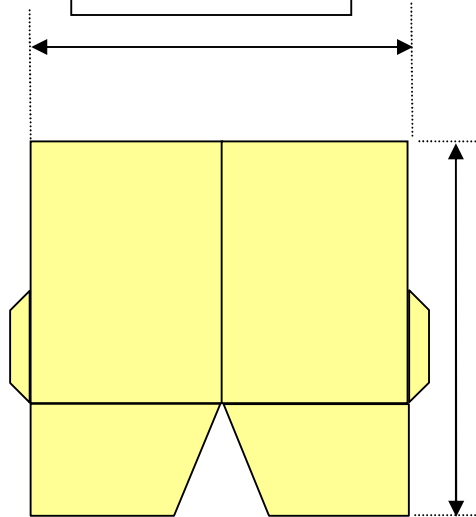
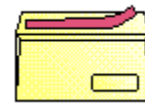


# Dominus MC

[www.fidiaint.com](http://www.fidiaint.com)



Min. 140 mm  
Max. 760 mm



Min. 24 mm  
Max. 800mm

## Dominus

The folding and gluing machine DOMINUS MC has a continuous friction feeder with vacuum belts, It is possible to use or disengage the roller alignment unit. Therefore alignment products (flexible book covers, envelopes etc) or traditional glue flap products (pocket folders, CD wallets etc) may be done on the same machine with minimum set up times. Some products are:

- CD/DVD wallets
- Photograph frames
- Simple boxes and tent cards

## Dominus MP

Same as MC with rising pile feeder for lighter paper

